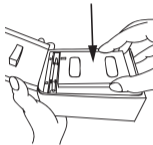


Jollylook Mini camera use

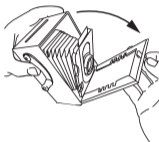
1. Open back



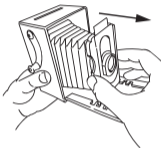
2. Insert cassette



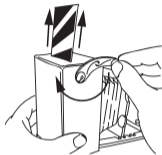
3. Open front



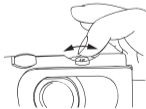
4. Choose focal distance



5. Roll out black sheet



6. Choose diaphragm



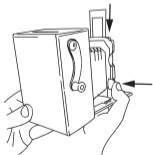
7. Pull out viewfinder



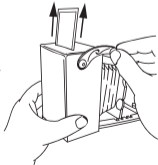
8. Frame up



9. Take picture



10. Spin to develop



Jollylook is a manual analog instant camera. Please watch this video instructions manual to learn how to use it and get great results.

You Tube™



SCAN TO WATCH

Light conditions	Diaphragm (F)
Bright sun and glare on the water or snow	64
Bright sun	45
Sun, light clouds	32
A lot of clouds, but light is good	22
Overcast	16
Very cloudy	11
Twilight, sunset, indoor near window on a bright day	8

For taking a photo indoor, in the evening, or at night - use manual shutter speed, remember that moving the camera during exposure will affect the image sharpness.