

## How to reset the Impossible I-1



**Frédéric**

June 26, 2016 23:50

[Follow](#)

**The I-1 uses a microprocessor to control camera functions. The microprocessor can be reset easily. If for example the I-1 doesn't charge or connect to the App you can reset the I-1.**

Please carefully read and follow the steps below and pay attention to the images illustrating this tutorial.

### What you need

- your Impossible I-1
- your Impossible I-1 USB cable
- a phone charger/adapter
- a pen or a pencil



1. Make sure that all switches are on the following positions. This is important for the reset as these are the initial positions of the camera.

Camera: OFF

Flash: ON

Lighten/Darken switch: MIDDLE

2. Make sure there is no film pack inserted in the I-1. If there is a film pack inserted, pull the film pack out of the camera.

3. Plug the Impossible I-1 USB cable on a smartphone charger/adaptor. Charge the camera for an hour.

### Recently viewed articles

[How to get the most out of Impossible Film](#)

[My photos are over or under-exposed with the flash](#)

### Related articles

[How to charge the Impossible I-1](#)

[Impossible I-1 User Manual & Quick Start](#)

[How to use the Impossible I-1 viewfinder](#)

[What is the Impossible I-1 camera?](#)

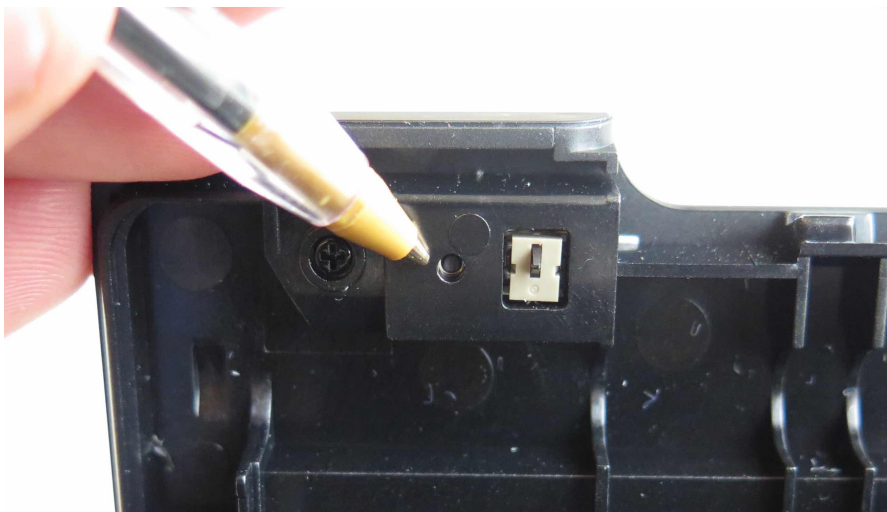
[Technical specifications of the Impossible I-1](#)

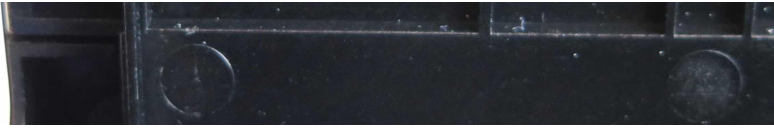


4. Disconnect the Impossible I-1 USB cable from the Impossible I-1. Double check that all switches are on the positions explained on step 1 (Camera: OFF, Flash: ON, Lighten/Darken switch: MIDDLE)

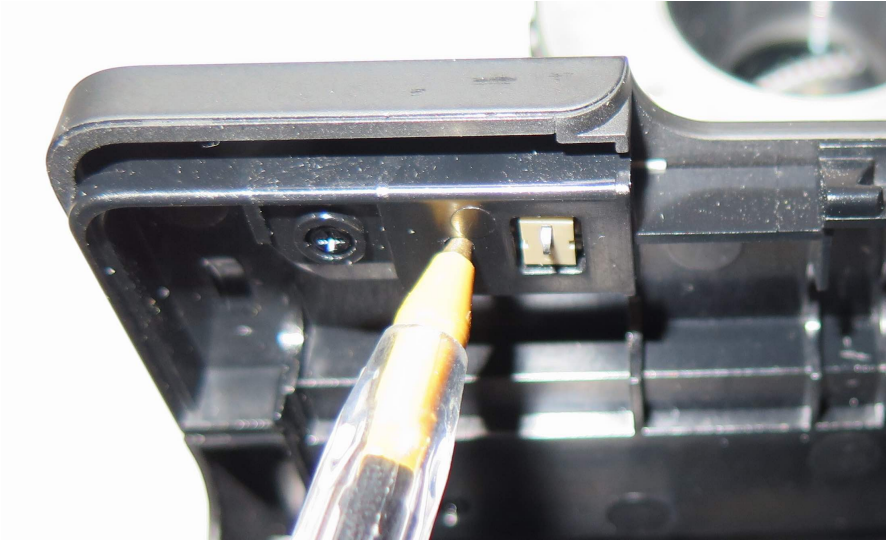


5. Open the door and locate the reset button. You can find the reset button inside the film door - it's a small black dot on the top left-hand side, above where the film pack is inserted.





6. Using a narrow pointed object like a pen or a pencil, press and hold the reset button for about 10 seconds.



7. Close the door, reconnect the Impossible I-1 USB cable to the I-1 and let it charge for another hour. Your I-1 is reset, you can turn it on again.

[Watch more how how to reset your Impossible I-1](#)

Was this article helpful?   0 out of 0 found this helpful



Have more questions? [Submit a request](#)

Comments