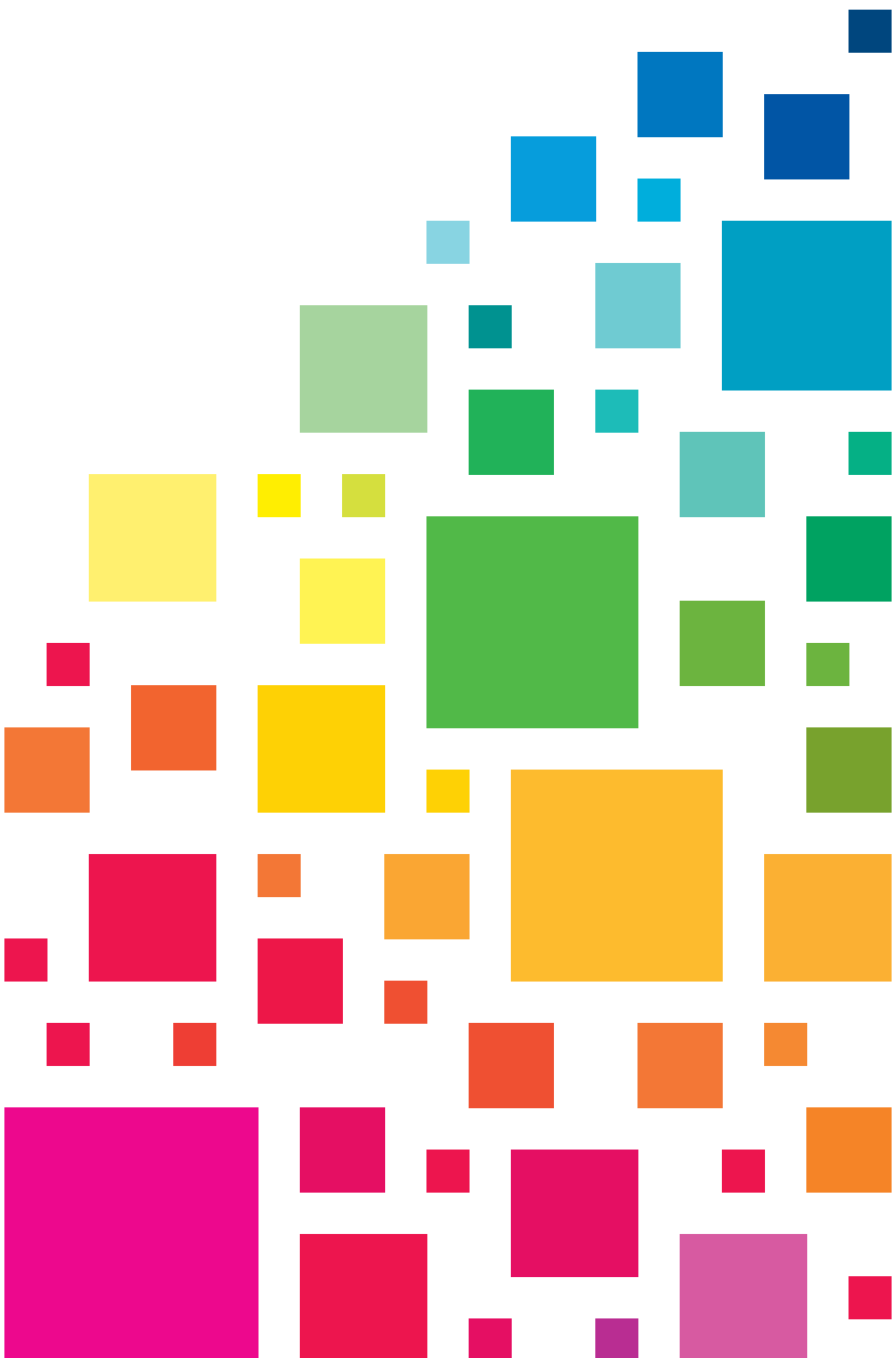


it starts with the right color



PDV Professional
Desktop Viewers



Uncover the soul of color

Choosing the right model



PDV e series



PDV e/D series with side walls



PDV e/Dx series

PDV Professional Desktop Viewers

gfi graphiclite® Compact D50 Color Viewing Systems for Critical Color Management

- Tight compliance with D50 ISO 3664:2009 standards
- Dimming option for soft proofing
- Space saving small footprint
- Folds for increased mobility and storage
- Optional side walls available

GTI's PDV e series provides optimal viewing conditions for prints, proofs, transparencies, and digital images wherever you need it – next to the color monitor, at the work station, at the lab counter – anywhere critical color appraisal is required.

The Right Look

GTI's PDV e series enables maximum viewing with a minimum footprint, with viewing areas from 11" x 17" (30 x 41 cm) to 23" x 25" (60 x 64 cm). All units feature a unique hinged design for easy transport and set up, and the compact, sleek styling blends well with any office décor.

The Right Light

Powered by GTI's Graphiclite 100 color viewing lamps and the latest electronic ballasts, the PDV e series guarantees tight compliance to the ISO-specified D50 industry standard for the critical appraisal and control of color images.

The Right Price

GTI's PDV e series delivers high quality Graphiclite performance at an economical price. Consistent, accurate color viewing has never been so affordable!

The Right Results

Typical office and studio lighting can dramatically distort color appearance. GTI is the leader in precision color evaluation, offering the most precise color viewing and matching technology and equipment anywhere. This enables greater color consistency, improved color reproduction quality, and reduced color remakes for maximum profits and minimum waste.



Based on the size and format of the images you will view, use the charts below to select the right PDV model to fit your unique needs.

Other features to consider:

Dimming for soft proofing: This feature allows an optimal brightness match between a hard copy image and a monitor image, resulting in improved color assessment.

Side Walls: Side walls reduce unwanted light from impacting the viewing plane and minimize spill light on the monitor.

Upper & Lower Luminaires: The PDV x model, with dual luminaires, dramatically improves light evenness across the viewing area and is ideal for the most critical color appraisal applications.

Transparency Viewing Option: Transparency viewing can be added to the PDV-2e (8" x 12" area) and PDV-3e (8" x 16" area) models. Contact GTI for details.

Viewing Areas

PDV-1e

Viewing Area (H x W): 11.7" x 16.3" (30x41cm) fits A4

PDV-2e, PDV-2ex, PDV-2e/D

Viewing Area (H x W): 13" x 19.3" (33x49cm) fits A4, A3 landscape

PDV-3e, PDV-3ex, PDV-3e/D, PDV-3e/Dx

Viewing Area (H x W): 16.5" x 25.3" (42 x 64cm) fits A4, A3, A3 + landscape

PDV-2020e, PDV-2020ex, PDV-2020e/D, PDV-2020e/Dx

Viewing Area (H x W): 23.5" x 25.3" (60 x 64cm) fits A4, A3, A3 +, A2

Dimensions

PDV-1e (Print Viewer)

Physical Dimensions (H x W x D): 16" x 16.25" x 11" (41 x 41 x 28 cm)
Base Dimensions (W x D): 16.25" x 6" (41 x 15 cm) Relamp Kit: L211

PDV-2e (Print Viewer)

PDV-2e/D (Print Viewer w/Dimming)
Physical Dimensions (H x W x D): 17.5" x 19.25" x 13.5" (44 x 49 x 34 cm)
Base Dimensions (W x D): 19.25" x 7.75" (49 x 20 cm) Relamp Kit: L215

PDV-2ex (Print Viewer w/Lower Luminaire & Side Walls)

Physical Dimensions (H x W x D): 19" x 19.25" x 13.5" (48 x 49 x 34 cm)
Base Dimensions (W x D): 19.25" x 9" (49 x 23 cm) Relamp Kit: L315

PDV-3e (Print Viewer)

PDV-3e/D (Print Viewer w/Dimming)
Physical Dimensions (H x W x D): 21" x 25.25" x 13.5" (53 x 64 x 34 cm)
Base Dimensions (W x D): 25.25" x 8.75" (64 x 22 cm) Relamp Kit: L217

PDV-3ex (Print Viewer w/Lower Luminaire & Side Walls)

PDV-3e/Dx (Print Viewer w/Dimming, Lower Luminaire, & Side Walls)
Physical Dimensions (H x W x D): 21" x 25.25" x 13.5" (53 x 64 x 34 cm)
Base Dimensions (W x D): 25.25" x 9.25" (64 x 23 cm) Relamp Kit: L317

PDV-2020e (Print Viewer)

PDV-2020e/D (Print Viewer w/Dimming)
Physical Dimensions (H x W x D): 28.75" x 25.25" x 16.25" (73 x 64 x 41 cm)
Base Dimensions (W x D): 25.25" x 10.5" (64 x 27 cm) Relamp Kit: L317

PDV-2020ex (Print Viewer w/Lower Luminaire & Side Walls)

PDV-2020e/Dx (Print Viewer w/Dimming, Lower Luminaire, & Side Walls)
Physical Dimensions (H x W x D): 29" x 25.25" x 16.25" (74 x 64 x 41 cm)
Base Dimensions (W x D): 25.25" x 11" (64 x 28 cm) Relamp Kit: L417



Model: VPI-64

In addition to the PDV e series, GTI offers a variety of color image viewing systems including VPI stations (shown above) for large format and vertical viewing, CVX and EVS color viewing stations for prints and proofs, Soft-View premier soft proofing viewing systems, and custom designed lighting environments for grand format print viewing.

GTI is precision color evaluation

For over 35 years, the engineering experts at GTI Graphic Technology, Inc. have been researching and developing precision products for color image viewing and color matching. The GTI team has earned a reputation for continued innovation, comprehensive technical support, and excellent customer service.

All GTI viewing systems provide the most accurate rendition of D50 daylight standards in commercially available image viewing systems, enabling customers to reap the full benefits of industry viewing standards.

At the heart of these viewing systems are GTI's proprietary Graphilite® lamps, which match the CIE D50 curve more closely than any other manufacturer. No other light source has the same goodness of fit or correlation to the D50 curve.

For more information about GTI's products and services, please visit www.gtilite.com or call 888-562-7066.

In the UK, www.graphictec.co.uk or call (44) 01924 277444.



MIX
Paper from
responsible sources
FSC® C103317



GTI Graphic Technology, Inc.

Newburgh, NY
Tel: 845-562-7066
www.gtilite.com

GTI GmbH

Tel: +49 4462 94 67 90
www.gti-normlicht.de

Graphic Technology (U.K.) Ltd.

Tel: +44 1924 277444
www.graphictec.co.uk